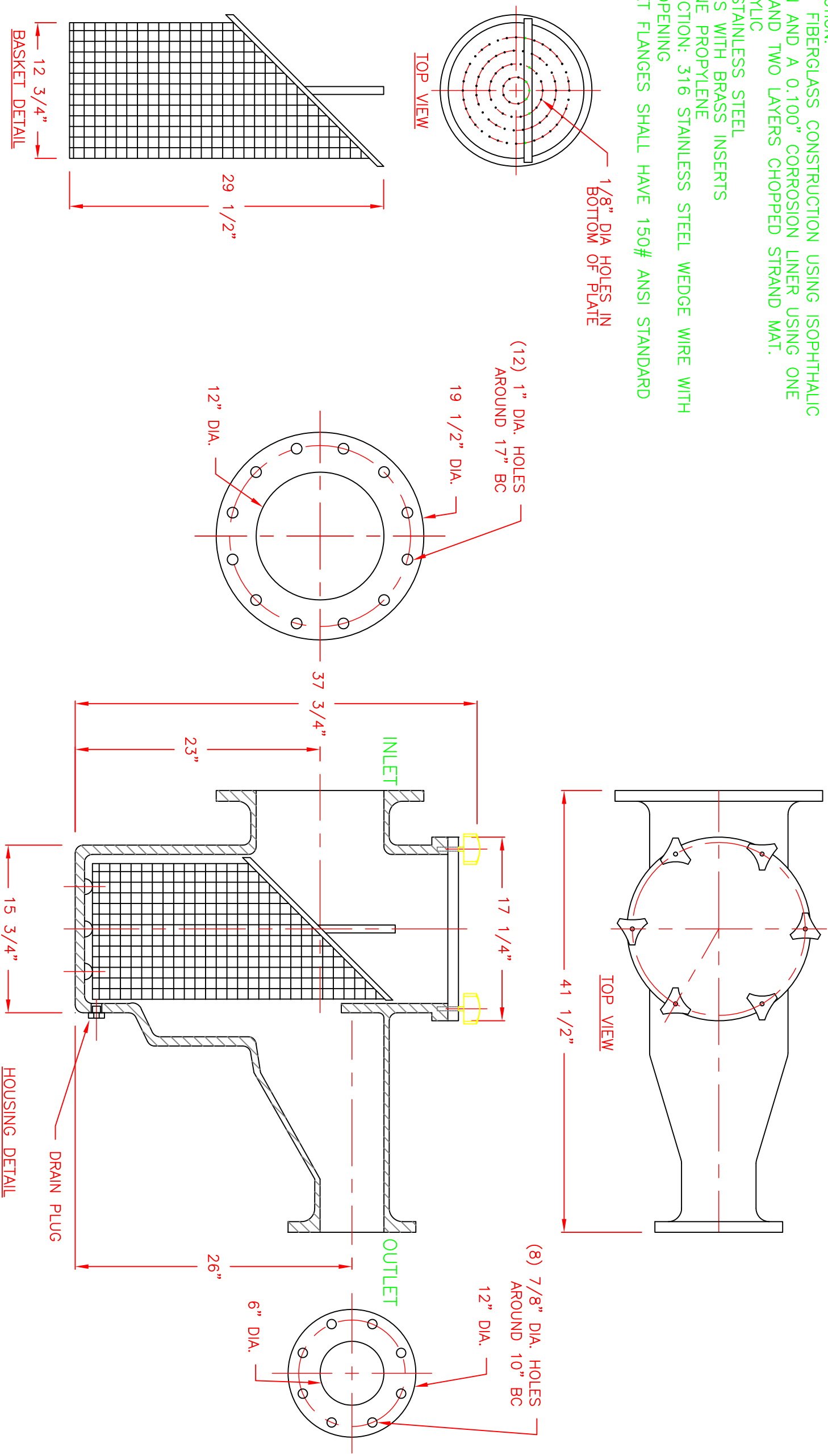


**GENERAL NOTES**

**MATERIALS OF CONSTRUCTION:**

1. STRAINER BODY: FIBERGLASS CONSTRUCTION USING ISOPHTHALIC POLYESTER RESIN AND A 0.100" CORROSION LINER USING ONE LAYER C-GLASS AND TWO LAYERS CHOPPED STRAND MAT.
2. LID: CLEAR ACRYLIC
3. TOGGLE BOLTS: STAINLESS STEEL
4. HAND KNOBS: ABS WITH BRASS INSERTS
5. O-RING: ETHYLENE PROPYLENE
6. BASKET CONSTRUCTION: 316 STAINLESS STEEL WEDGE WIRE WITH 3/16" SQUARE OPENING
7. INLET AND OUTLET FLANGES SHALL HAVE 150# ANSI STANDARD DRILL PATTERNS.



CERTIFIED FOR PRODUCTION

BY: \_\_\_\_\_ DATE: \_\_\_\_\_

MER-MADE, INC.

THIS DRAWING CONTAINS INFORMATION PROPRIETARY TO MER-MADE FILTER INCORPORATED. IT IS SLANTED IN CONFIDENCE AND IS TO BE USED SOLELY FOR THE PURPOSE FOR WHICH IT IS FURNISHED AND IS TO BE RETURNED UPON REQUEST. ANY REPRODUCTION OR USE OF THIS DRAWING IN WHOLE OR IN PART WITHOUT THE WRITTEN AUTHORIZATION OF MER-MADE FILTER INCORPORATED.

TOLERANCES UNLESS OTHERWISE SPECIFIED

MACHINED DIMENSIONS:

X.X ±.020 FINISH: 125/  
 X.XX ±.010 ANGLES: ±2°  
 X.XXX ±.005 RADII: ±.03

FRACTIONAL DIMENSIONS:

1/X ± 1/8

REMOVE ALL BURRS AND BREAK ALL SHARP EDGES: .016 x 45°

**MER-MADE**

PO BOX 306  
 DENMARK, SC 29042  
 P:803-793-4263 F:803-793-4265

**12" X 6" FO SERIES ECCENTRIC FRP BASKET STRAINER**

SIZE: B DWN BY: DS CHK BY: JEA DWG NO. M-0125

SCALE: NTS DATE: 3/28/2018 Sheet: 1 OF 1

REV	DESCRIPTION	DATE