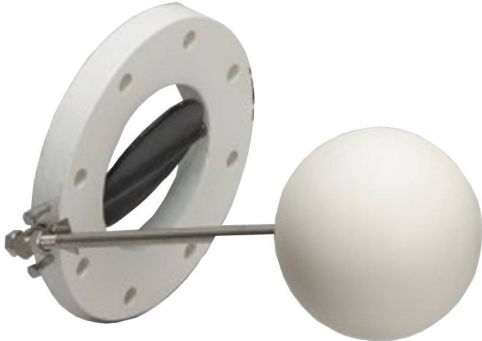


FV-S Float Valve Single Arm - Single Float



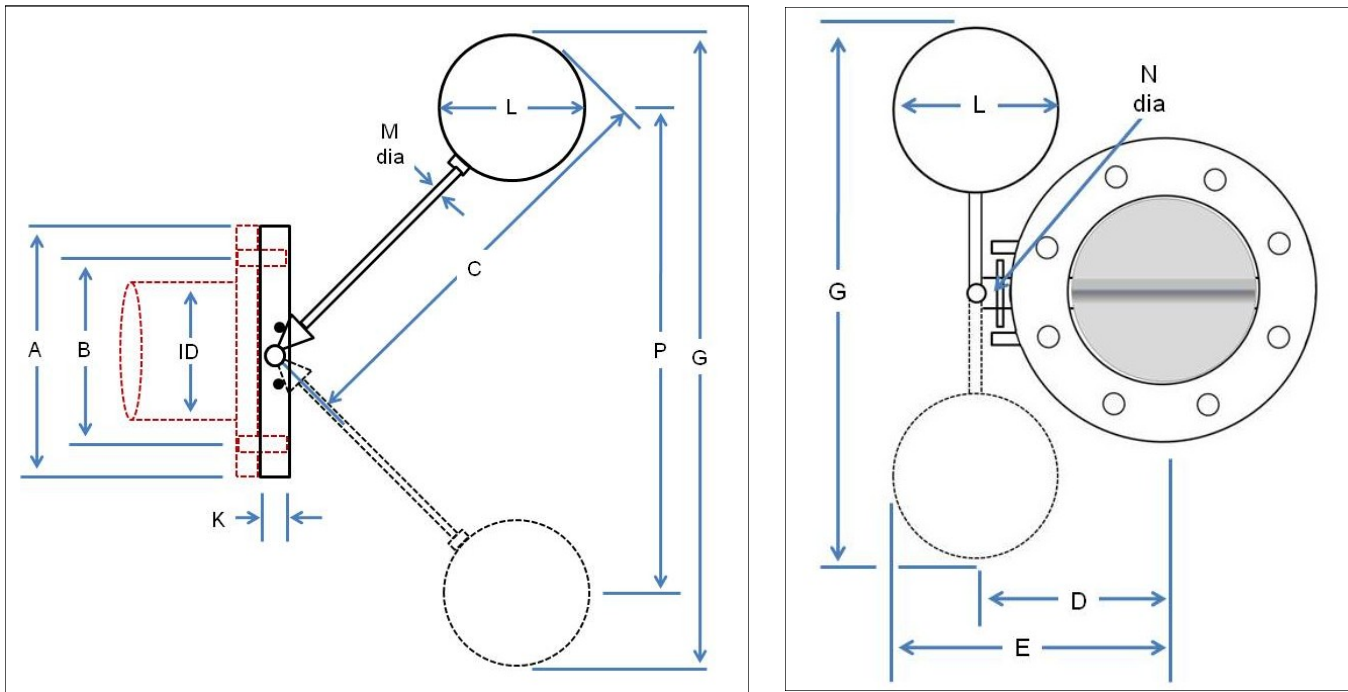
MATERIAL

- Valve body - corrosion grade Isophthalic Polyester
- Valve disc - corrosion grade Isophthalic Polyester
- Float Arm - Solid 316 SS
- Valve shaft - Solid 316 SS
- Hardware - 316 SS
- Float Ball - polyethylene

DESIGN

For end of open pipe installation only
Not for in-line use
For 4", 6" and 8" pipe only
Bolt pattern - ANSI 150

SS arm threaded 3/8" for float attachment
Valve disc molded onto valve shaft
Approximately 20% flow when closed
Arm located on left (looking into flow)



ID	A	B	C	D	E	G	K	L	M	N	P
4"	9 1/2"	7 1/2"	23"	6 5/8"	10 1/8"	34"	1"	8"	3/8"	1/2"	26"
6"	11 1/2"	9 1/2"	23"	7 5/8"	11 1/8"	34"	1"	8"	3/8"	1/2"	26"
8"	14"	11 3/4"	23"	8 7/8"	12 3/8"	34"	1 1/2"	8"	5/8"	3/4"	26"

