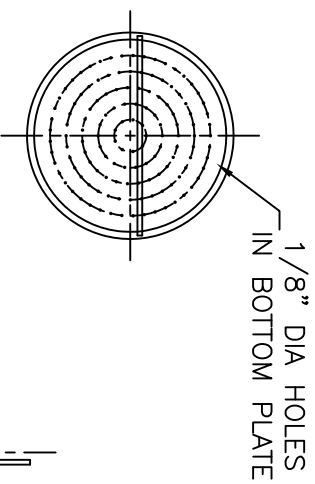
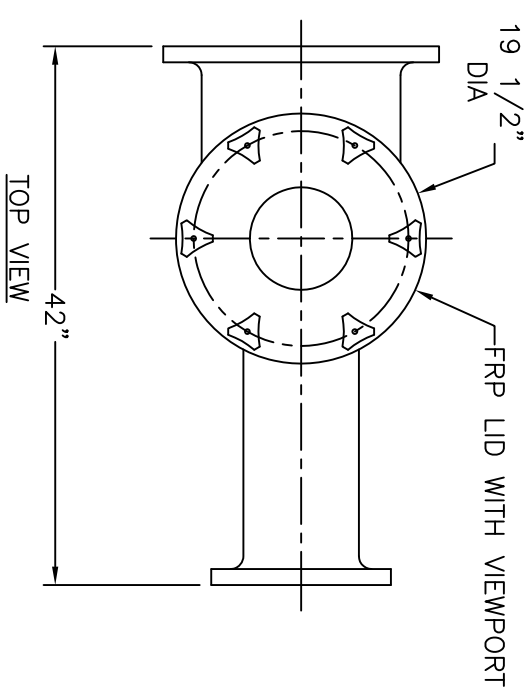


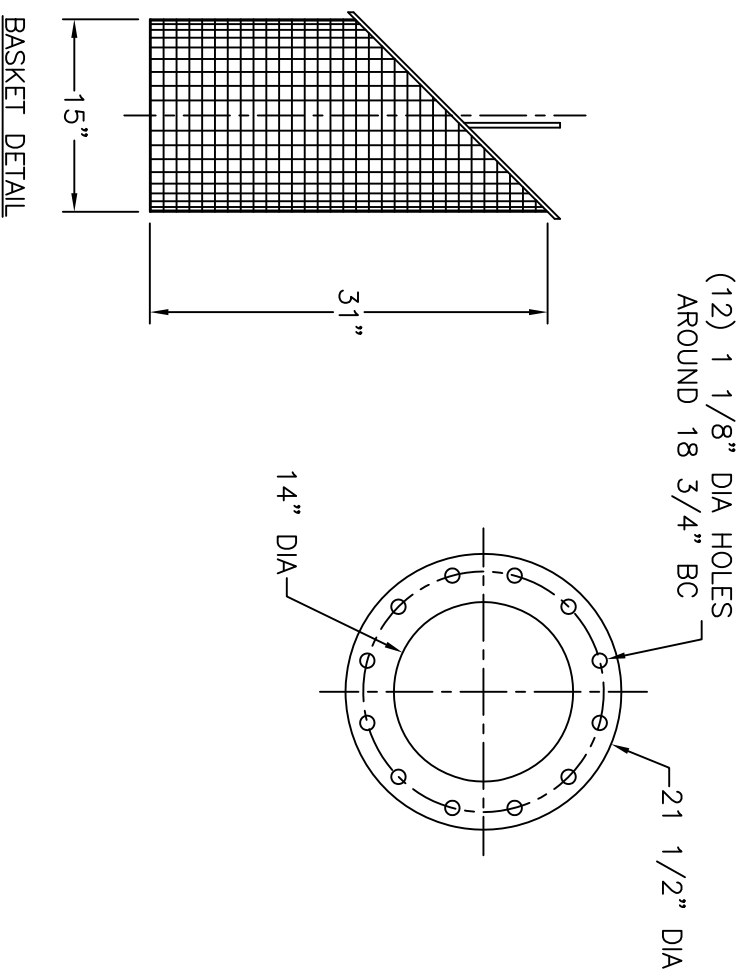
NOTES

1. STRAINER BODY: FIBERGLASS CONSTRUCTION USING ISOPHTHALIC POLYESTER RESIN AND A .100" THK. CORROSION LINER USING ONE LAYER C GLASS AND TWO LAYERS CHOPPED STRAND MAT.
2. LID: FRP WITH ACRYLIC VIEWPORT
3. TOGGLE BOLTS: STAINLESS STEEL
4. HAND KNOBS: ABS WITH BRASS INSERTS
5. O-RING: ETHYLENE PROPYLENE
6. BASKET: 316 STAINLESS STEEL WEDGE WIRE, 3/16" SQUARE OPENING

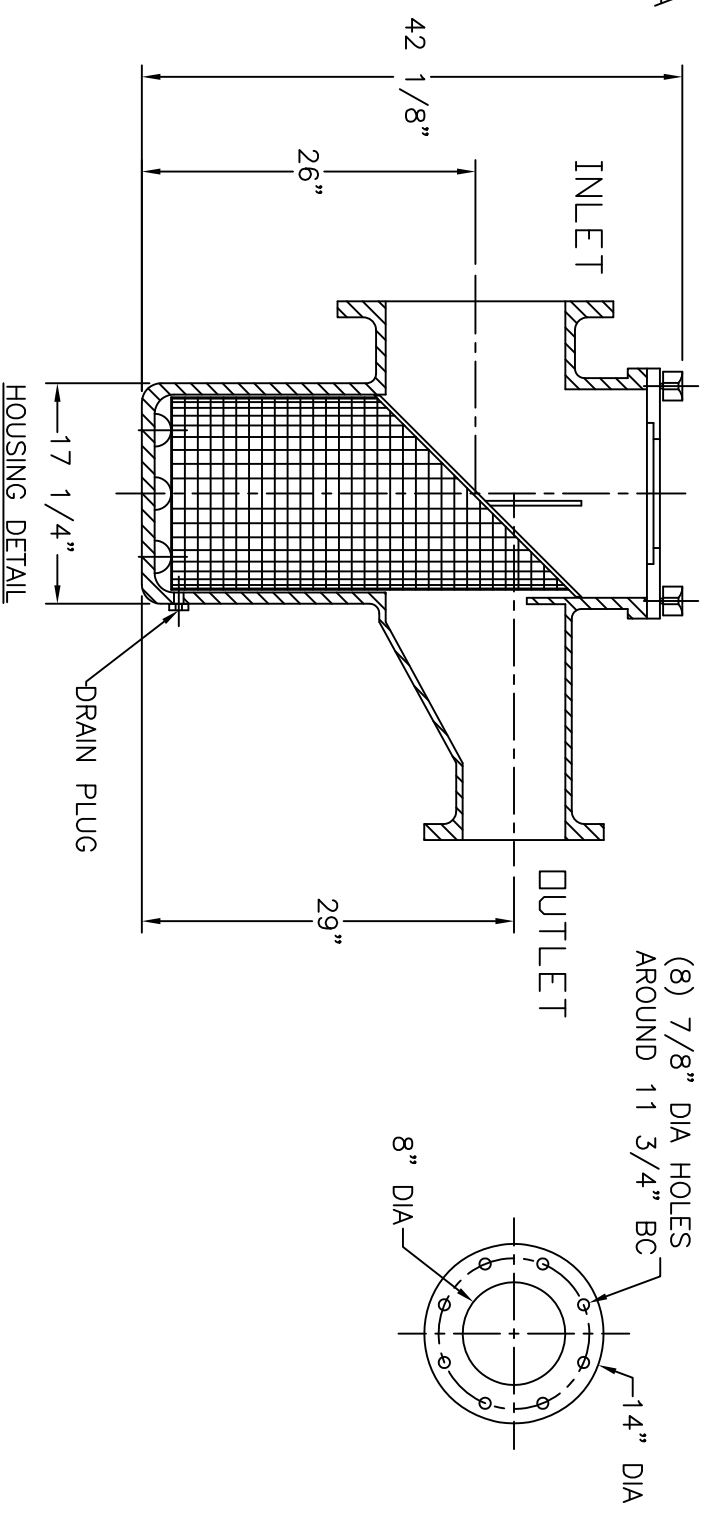
-INLET AND OUTLET FLANGES SHALL HAVE 150# ANSI STANDARD DRILL PATTERNS



TOP VIEW



BASKET DETAIL



HOUSING DETAIL

CERTIFIED FOR PRODUCTION	
BY: _____	DATE: _____
MER-MADE, INC.	

TOLERANCES UNLESS OTHERWISE SPECIFIED		
MACHINED DIMENSIONS:		
XX	±.020	FINISH: 125/
XXX	±.010	ANGLES: ±2'
X:XXX	±.005	RADI: ±.03
FRACTIONAL DIMENSIONS:		
1/X	± 1/8	
REMOVE ALL BURRS AND BREAK ALL SHARP EDGES: .016 x 45°		

REV	DESCRIPTION	DATE

MER-MADE		PO BOX 306
14" x 8" T-STYLE ECCENTRIC REDUCING BASKET STRAINER		DENMARK, SC 29042
SIZE: B		P:803-793-4263 F:803-793-4265
DWN BY: SJV	DWG NO. M-0206	
CHK BY:		
SCALE: NTS	DATE: 05/21/20	Sheet: 1 OF 1
REV R0		

THIS DRAWING CONTAINS INFORMATION PROPRIETARY TO MER-MADE FILTER INCORPORATED. IT IS SUBMITTED IN CONFIDENCE AND IS TO BE RETURNED UPON REQUEST. THIS DRAWING AND SPECIFICATIONS ARE NOT TO BE REPRODUCED, COPIED, OR TRANSMITTED IN ANY FORM OR BY ANY MEANS WITHOUT THE WRITTEN AUTHORIZATION OF MER-MADE FILTER INCORPORATED.