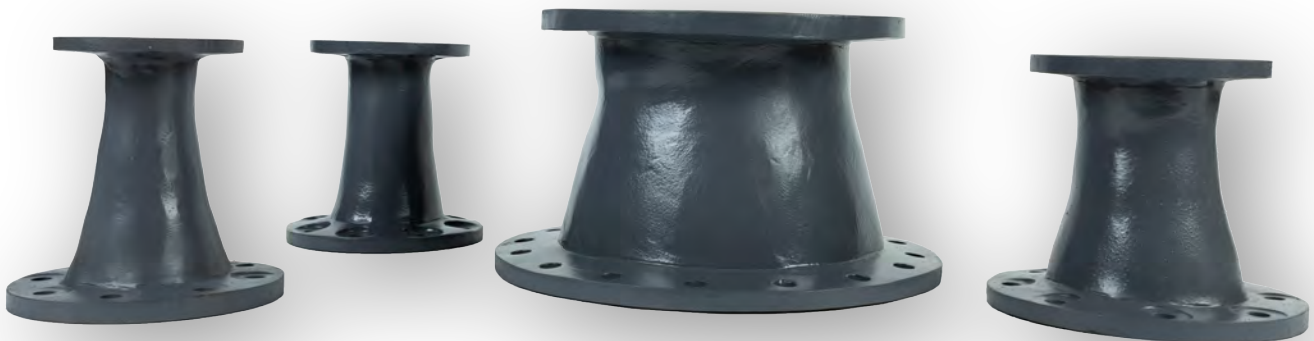


# Crystal Clear Water Starts Here

## Mer-Made Reducers

**Reducers** are used to diminish the size of a pipe to control the flow into and out of circulating pumps. Because pump connections are usually smaller than the process piping coming into and from the pump, reducers are essential in creating a uniform velocity distribution profile to support the proper functioning of the pump.

At Mer-Made Filter, we offer concentric and eccentric reducers to meet flow requirements of a system or adapt to existing piping of a different size. While our reducers come in three standard lengths, they can be customized to fit any situation. Made of fiberglass, our reducers offer a more durable alternative to the traditional molded PVC reducers with integral flanges designed to resist cracking if overtightened. Our reducers boast a 50 PSI pressure rating and feature flat-face flanges with 150-lb ANSI drilling patterns.

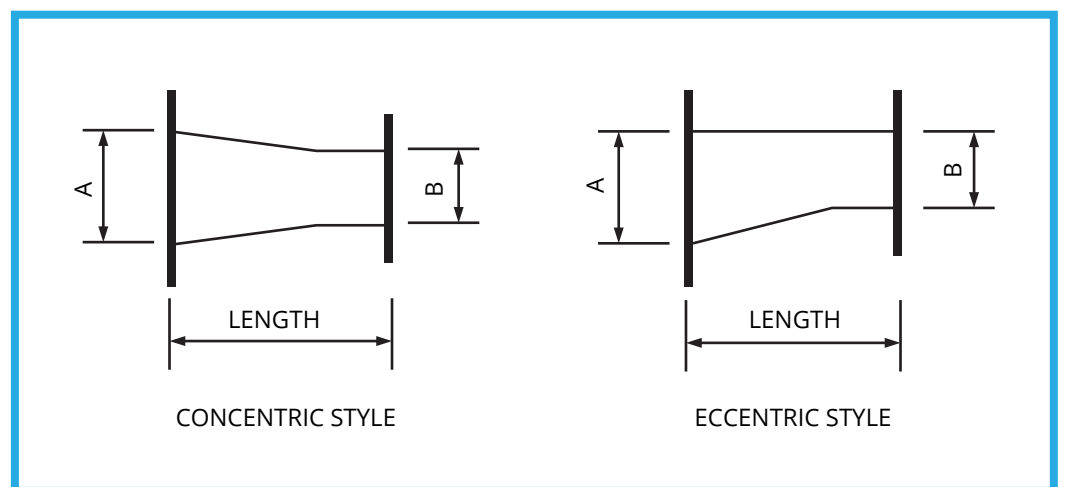


**For pricing and additional information please contact us.**

[sales@mermade.com](mailto:sales@mermade.com)  
803.793.4265



"A" X "B"	LENGTH
16" X 14"	14"
16" X 12"	14"
16" X 10"	14"
16" X 8"	14"
14" X 12"	14"
14" X 10"	14"
14" X 8"	14"
12" X 10"	14"
12" X 8"	14"
12" X 6"	14"
12" X 5"	14"
10" X 8"	14"
10" X 6"	14"
10" X 5"	14"
8" X 6"	12"
8" X 5"	12"
8" X 4"	12"
6" X 5"	12"
6" X 4"	12"
6" X 3"	12"
4" X 3"	9"
4" X 2-1/2"	9"
4" X 2"	9"



FLANGE DATA					
I.D.	O.C.	B.C.	# Holes	Hole Dia.	Fig. Thk.
16"	24"	21-1/4"	16	1-1/8"	1-3/16"
14"	21-1/2"	18-3/4"	12	1-1/8"	1-1/16"
12"	19-1/2"	17"	12	1"	1"
10"	16-1/2"	14-1/4"	12	1"	7/8"
8"	14"	11-3/4"	8	7/8"	3/4"
6"	11-1/2"	9-1/2"	8	7/8"	5/8"
5"	10-1/2"	8-1/2"	8	7/8"	5/8"
4"	9-1/2"	7-1/2"	8	3/4"	9/16"
3"	9-1/2"	6"	4	3/4"	1/2"
2-1/2"	7-1/2"	5-1/2"	4	3/4"	1/2"
2"	6-1/2"	4-3/4"	4	3/4"	1/2"