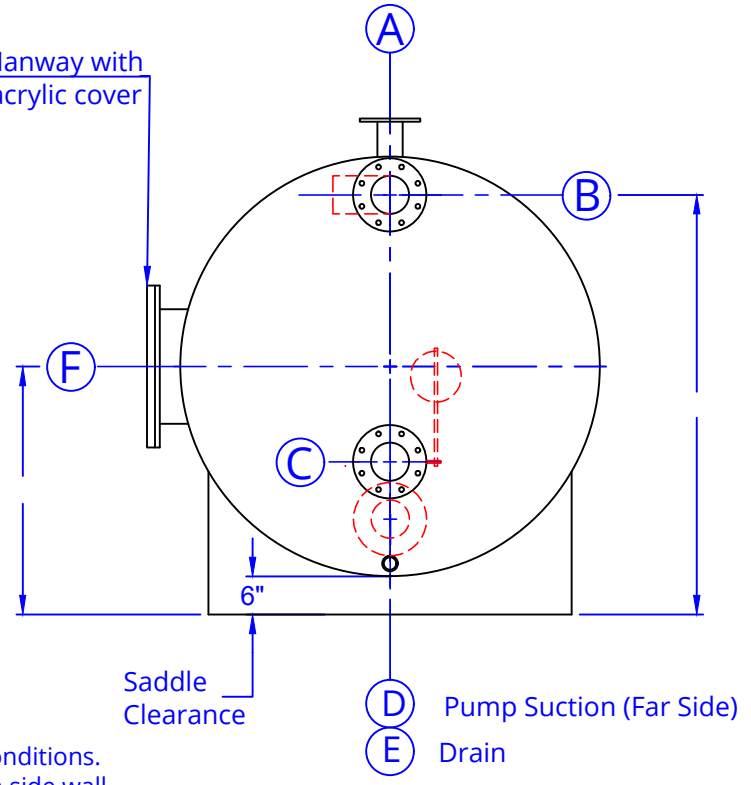


Example Configuration



Saddle Details:

- Base tank uses two saddles.
- Saddles permanently bonded to exterior.
- Saddle height = 6" clearance above floor.
- Contact surface is 120°.

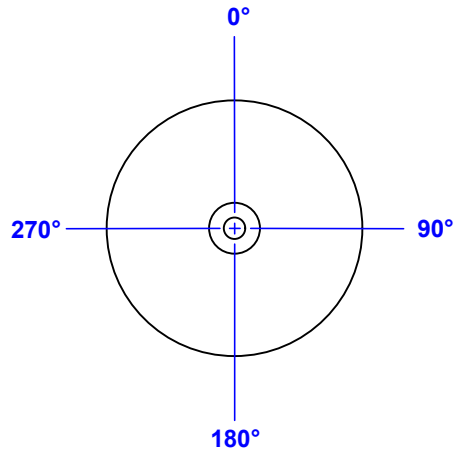
Comments:

- Fittings may be located as required by site conditions. Fittings may be located on top, on domes, on side wall.
- Additional fittings may be requested.
- Surge capacity calculated based on elevation shown. Change in elevation will modify surge capacity.

Total Capacity: Gallons
 Calculated Surge Capacity: Gallons

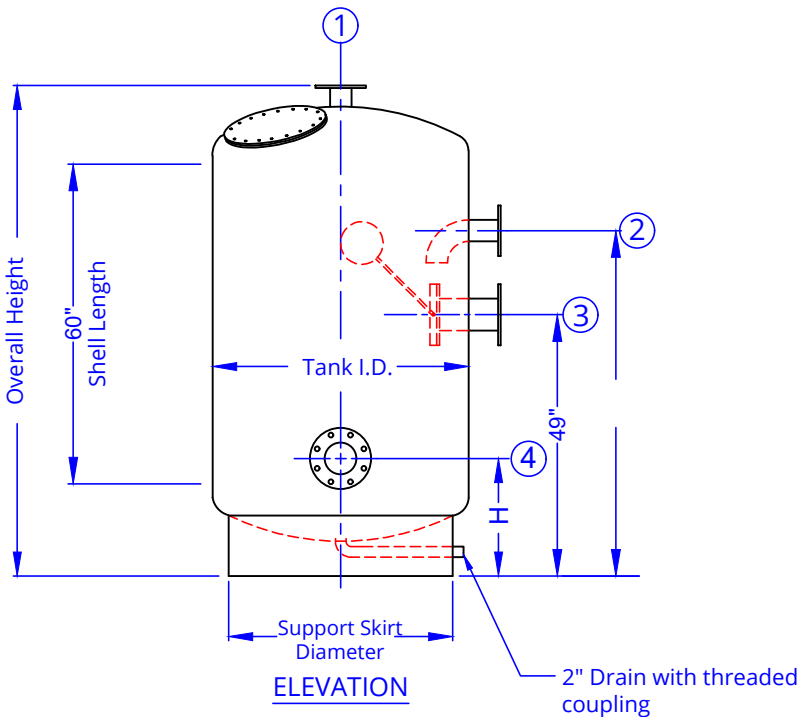
Mark	ID	OD	BC	Holes	Hole Ø	Thk.	Description
A							Vent
B							Gutter w/ elbow
C							Main Drain
Float Valve Installed in tank:							
D							Pump Suction
E	2"						Threaded PVC Coupling Drain
F							Manway & Cover

MER-MADE FILTER	
PO Box 306 Denmark, SC 29042 P: 803-793-4265 F: 803-793-4332	
Customer:	
Project:	
Horizontal Surge Tank	Dwg. T-14395 Date: 10-08-21



ORIENTATION

Specify location of fittings, manway and drain.



ELEVATION

MER-MADE VERTICAL SURGE / BALANCE TANK

TANK DIAMETER	30"	36"	42"	48"	54"	60"	66"	72"	84"	96"
TANK OUTSIDE DIAMETER	31.25"	37.25"	43.25"	49.25"	55.25"	61.25"	67.25"	73.25"	85.5"	97.5"
OVERALL HEIGHT	87"	88.25"	89.25"	92"	95"	95.25"	101"	102"	106"	111.5"
SUPPORT SKIRT DIAMETER	24"	30"	36"	42"	48"	54"	60"	66"	72"	84"
"H" PUMP SUCTION ELEV.	20"	20"	20"	22"	24"	24.25"	26"	28"	32"	32"
MANWAY SIZE	16"	16"	16"	18"	18"	18"	18"	18"	18"	18"
TOTAL CAPACITY	202	297	412	547	705	885	1091	1320	1850	2500
SURGE CAPACITY	95	142	214	272	353	428	590	721	1050	1675
ESTIMATED WEIGHT, LBS.	300	350	400	425	485	550	600	630	1000	1150

SPECIFY FITTING SIZE

1 - VENT										
2 - GUTTER										
3 - MAIN DRAIN										
FLOAT VALVE STYLE										
4 - PUMP SUCTION										

STANDARD FEATURES

- RESIN: CORROSION RESISTANT ISOPHTHALIC POLYESTER FOR PROVEN USE IN THE COMMERCIAL POOL INDUSTRY.
- CONTACT MOLDED CONSTRUCTION INCORPORATING A 100 MIL CORROSION LINER WITH HEAVY DUTY FIBERGLASS FABRIC REINFORCEMENT LAYERS.
- CONSTRUCTION STANDARDS: ASTM D-4097 AND NBS PS15-69.
- EXTERNAL SURFACE PROTECTED WITH ULTRAVIOLET LIGHT INHIBITORS.
- FIBERGLASS FLANGED FITTINGS LOCATED AS REQUIRED WITH ANSI 150 LB. STANDARD DRILLING PATTERNS.
- MAIN DRAIN PROVIDED WITH MER-MADE MODULATING FLOAT VALVE.
- DEFAULT MANWAY IS LOCATED ON TOP DOME.
- SIDE MANWAY IS OPTIONAL.
- ADDITIONAL FITTING MAY BE REQUESTED.
- TANK HYDRO-STATICALLY TESTED AT FACTORY PRIOR TO SHIPMENT.

DESIGN CONSIDERATIONS

- EACH TANK INDIVIDUALLY ENGINEERED.
- DESIGNED FOR USE BELOW POOL DECK LEVEL.
- TANK IS SELF CONTAINED FOR FULLY FLOODED SERVICE.
- TANK MUST BE VENTED ABOVE WATER LEVEL OF POOL. VENT MUST BE NO LESS THAN ONE PIPE SIZE SMALLER THAN PUMP SUCTION. VENT CANNOT BE REDUCED IN SIZE OR OBSTRUCTED.

OPTIONS

- TANK MAY BE MADE IN MULTIPLE SECTIONS USING BOLTED BODY FLANGES.
- INTERNAL PIPING AND ELBOWS AVAILABLE.
- INTERNAL VORTEX BREAKER AVAILABLE.
- SIGHTGLASS OR PROBE CHAMBER AVAILABLE.
- WATER LEVEL CONTROLLER SYSTEM AVAILABLE.

MER-MADE FILTER

PO Box 306 Denmark, SC 29042
P: 803-793-4265 F: 803-793-4332

Customer:

Project:

Vertical Surge Tank

Dwg. T-14396
Date: 09-24-21