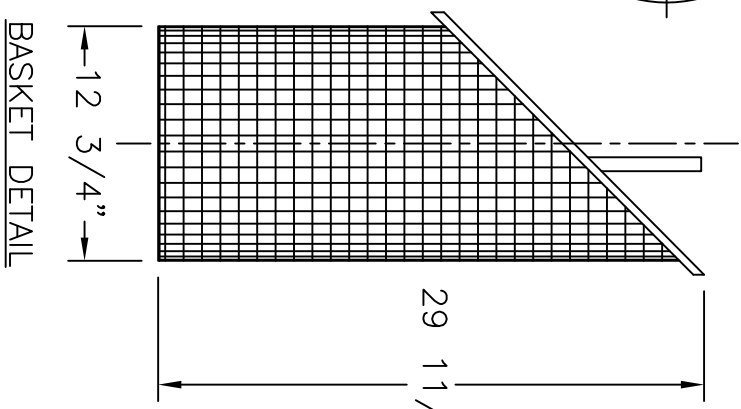
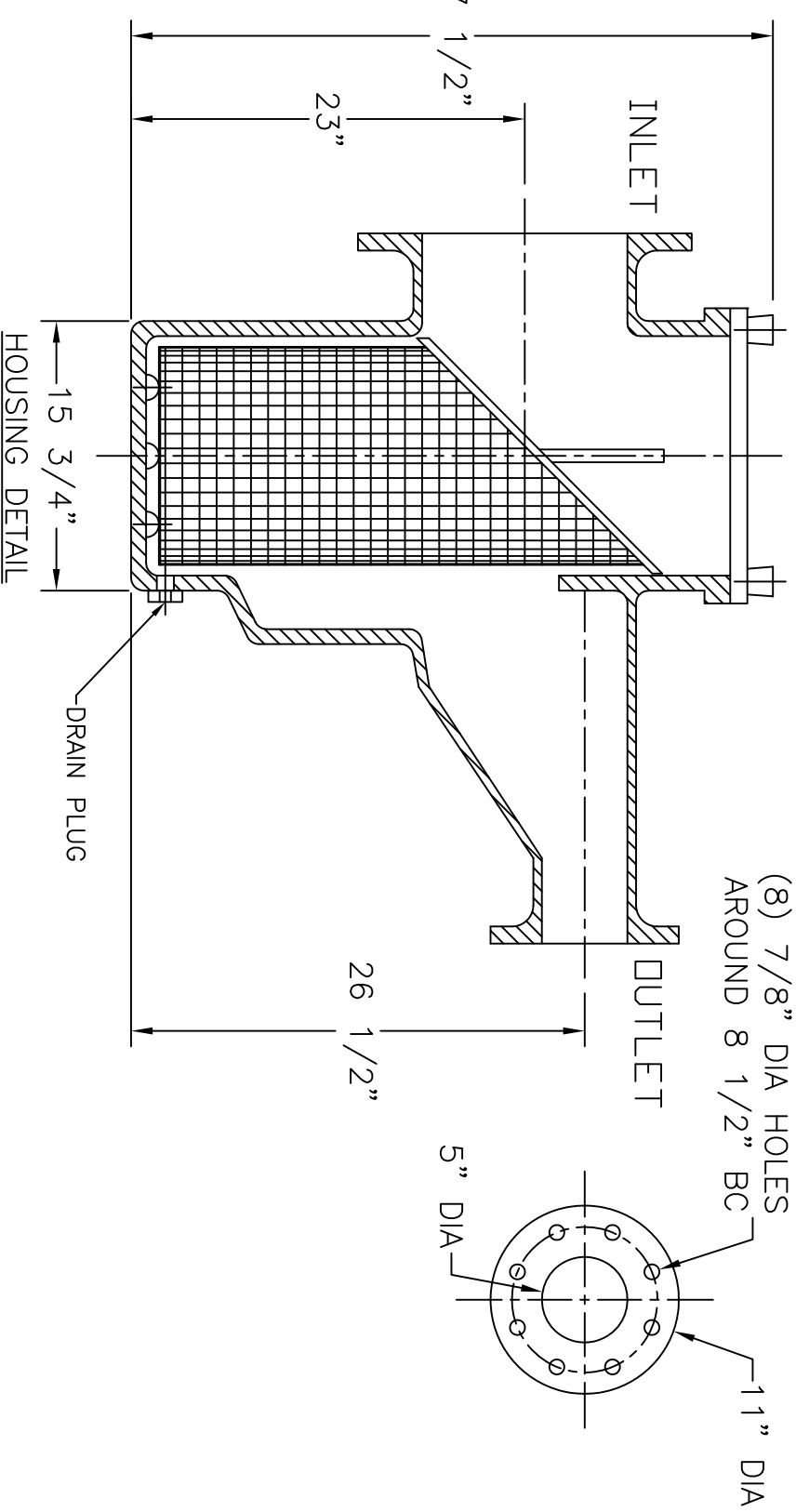
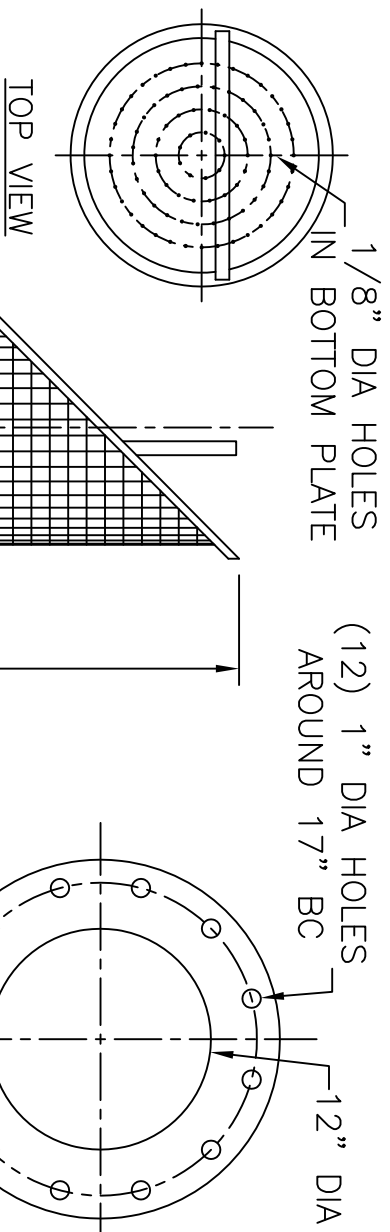
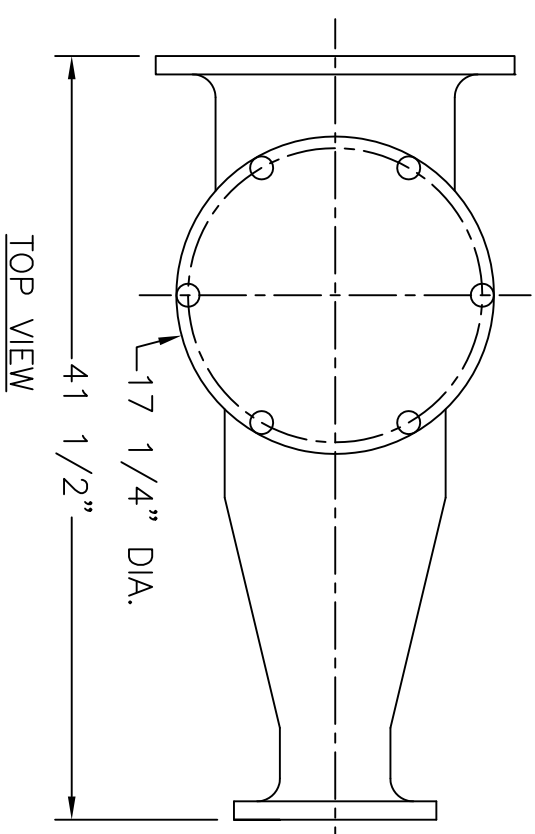


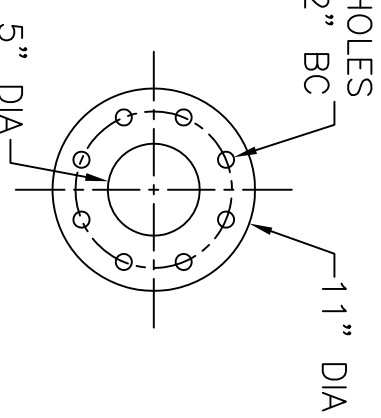
**NOTES**

1. STRAINER BODY: FIBERGLASS CONSTRUCTION USING ISOPHTHALIC POLYESTER RESIN AND A .100" THK. CORROSION LINER USING ONE LAYER C GLASS AND TWO LAYERS CHOPPED STRAND MAT.
2. LID: CLEAR ACRYLIC
3. TOGGLE BOLTS: STAINLESS STEEL
4. HAND KNOBS: FRP WITH STAINLESS STEEL INSERTS
5. O-RING: ETHYLENE PROPYLENE
6. BASKET: 316 STAINLESS STEEL WEDGE WIRE, 3/16" SQ. OPENING

INLET AND OUTLET FLANGES SHALL HAVE 150# ANSI STANDARD DRILL PATTERNS



TOP VIEW



(8) 7/8" DIA HOLES  
AROUND 8 1/2" BC

CERTIFIED FOR PRODUCTION		TOLERANCES UNLESS OTHERWISE SPECIFIED			
BY: _____ DATE: _____		MACHINED DIMENSIONS:			
MER-MADE, INC.		FINISH: 125/ ±.020			
		ANGLES: ±.2°			
		RADI: ±.03			
		FRACTIONAL DIMENSIONS:			
		1/X ± 1/8			
THIS DRAWING CONTAINS INFORMATION PROPRIETARY TO MER-MADE FILTER INCORPORATED. IT IS SLIGHTLY IN CONFIDENCE AND IS TO BE RETURNED UPON REQUEST. NO PARTS OR SUBASSEMBLIES SHALL BE REPRODUCED, TRANSMITTED, DISCLOSED, OR USED OTHERWISE IN WHOLE OR IN PART WITHOUT THE WRITTEN AUTHORIZATION OF MER-MADE FILTER INCORPORATED.		REMOVE ALL BURRS AND BREAK ALL SHARP EDGES: .016 x 45°			
		REV	DESCRIPTION	DATE	SCALE: NTS
<b>MER-MADE</b>		PO BOX 306 DENMARK, SC 29042 P:803-793-4263 F:803-793-4265			
12" X 5" FO SERIES ECCENTRIC REDUCING BASKET STRAINER		SIZE: B DWN BY: SJV CHK BY: _____ DWG NO. M-0124			
REV		RO			